

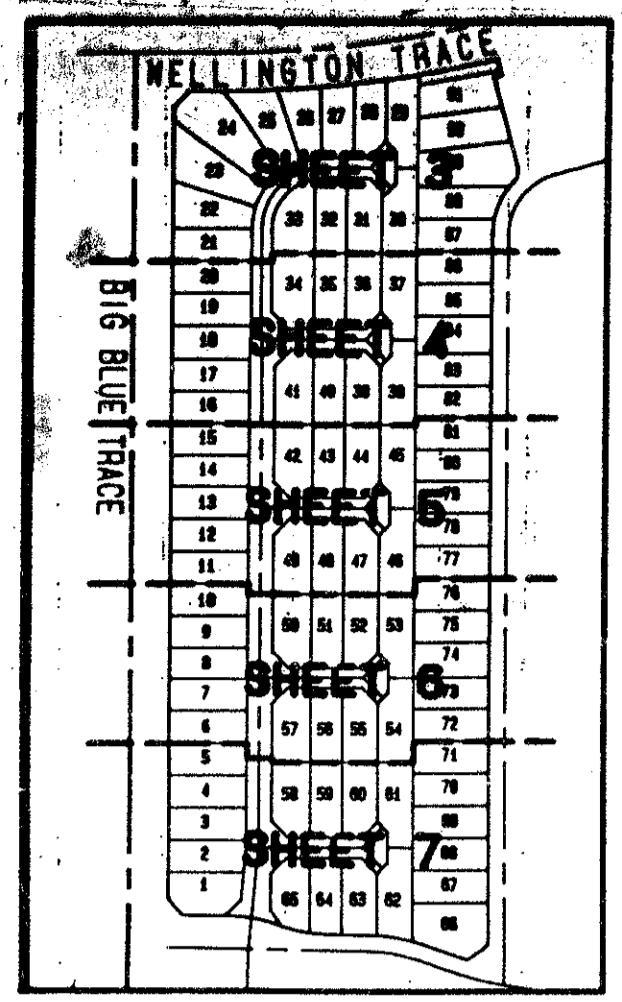
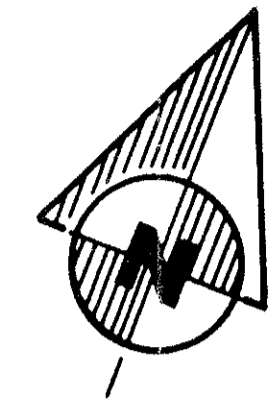
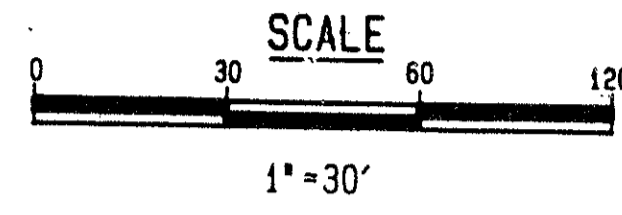
EMERALD FOREST PLAT NO. 2

OF WELLINGTON - P. U. D.

BEING A REPLAT OF PART OF EMERALD FOREST OF WELLINGTON - P. U. D. AS RECORDED IN PLAT BOOK 56, PAGES 177-181, INCLUSIVE, PUBLIC RECORDS OF PALM BEACH COUNTY, FLORIDA AND OTHER LANDS.

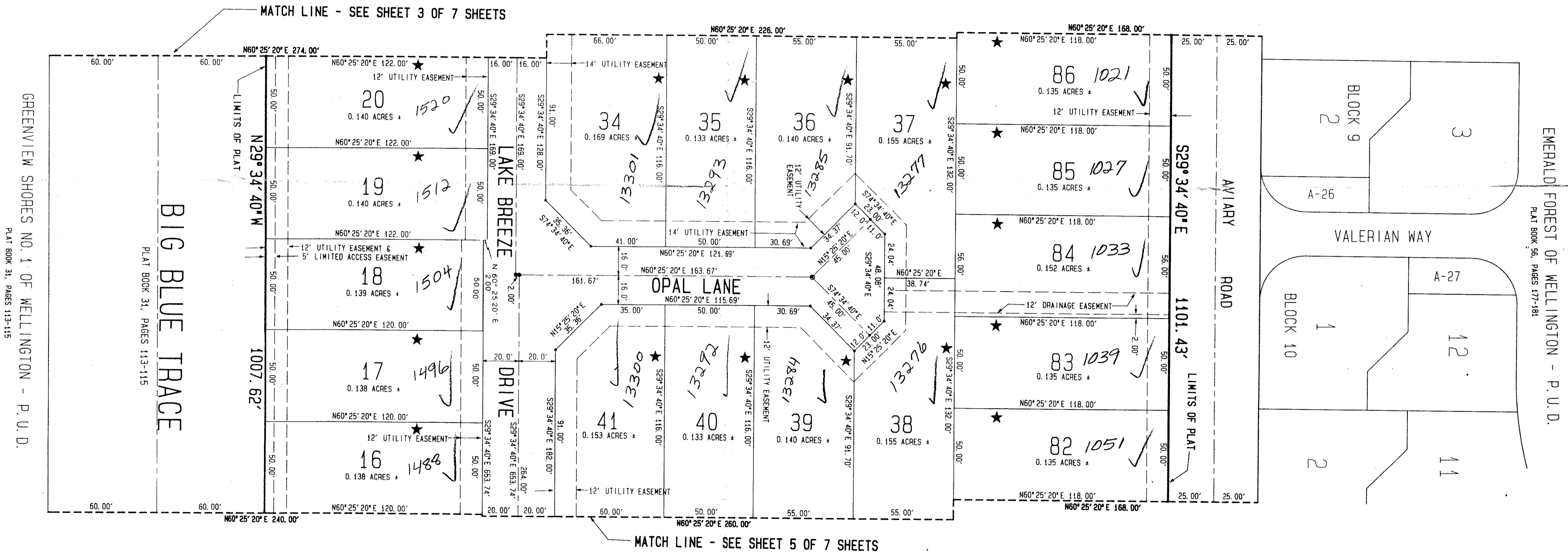
LYING IN PART OF SECTIONS 4 AND 9
TOWNSHIP 44 SOUTH, RANGE 41 EAST
PALM BEACH COUNTY, FLORIDA

SHEET 4 OF 7 SHEETS
JANUARY 1991



INDEX MAP

- LEGEND**
- B.L.K. = BLOCK
 - R/W = RIGHT-OF-WAY
 - P.C. = POINT OF CURVATURE
 - P.B.C. = PALM BEACH COUNTY
 - NO. = NUMBER
 - P.U.D. = PLANNED UNIT DEVELOPMENT
 - ± = MORE OR LESS
 - A = ARC LENGTH
 - Δ = CENTRAL ANGLE
 - R = RADIUS
 - C.L. = CENTERLINE
 - D.U. = DWELLING UNIT
 - P.L.S. = PROFESSIONAL LAND SURVEYOR
 - P.C.P. = PERMANENT CONTROL POINT
 - P.R.M. = PERMANENT REFERENCE MONUMENT
 - P.O.B. = POINT OF BEGINNING
 - ★ = ZERO LOT LINE



GREENVIEW SHORES NO. 1 OF WELLINGTON - P. U. D.
PLAT BOOK 31, PAGES 113-115

BIG BLUE TRACE
PLAT BOOK 31, PAGES 113-115

EMERALD FOREST OF WELLINGTON - P. U. D.
PLAT BOOK 56, PAGES 177-181

MATCH LINE - SEE SHEET 5 OF 7 SHEETS

EXISTING EASEMENTS PER THE PARENT PLAT OF EMERALD FOREST OF WELLINGTON - P. U. D. HAVE BEEN ABANDONED IN OFFICIAL RECORD BOOK 6712, PAGES 1961 THROUGH 1964, INCLUSIVE, OF THE PUBLIC RECORDS OF PALM BEACH COUNTY, FLORIDA.

SUBDIVISION → EMERALD FOREST PLAT 2
 BOOK 68
 FLOOD ZONE B
 QUAD # 77
 ZIP CODE 33414
 PAGE 50
 FLOOD MAP # 1000
 ZONING AK
 SE
 SUB NAME WELLINGTON
 02/19/91

T&Z 727

Dailey-Fotony, inc.
 land surveyors, planners, engineers
 5050 10th Avenue North, Suite B - Lake Worth, Florida 33463-2602
 Phone 407/965-8787